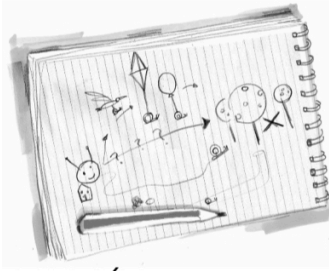


### Focus on Character



What type of character do you think José is and how do you think the author might use him in the story? Explain your answer. You may also describe what you think may happen next in the story.



For use with the book; 'Ernie Gonzales: The Determined Dreamer' or free chapter book readings on My You Tube Channel via [www.bethshepherd.com](http://www.bethshepherd.com). Relates to Chapter 13; The Two Hitchhikers.